



DATASHEET

-Preliminary-

Surface Acoustic Wave Filter

- **Application : BAND41(110MHz) Tx Filter**
- **Model : SFDG26AQ102**
- **Center Frequency : 2600 [MHz]**



WISOL CO., LTD.

373-7, GAJANG-DONG, OSAN-SI
GYUNGGI-DO, KOREA, 447-210

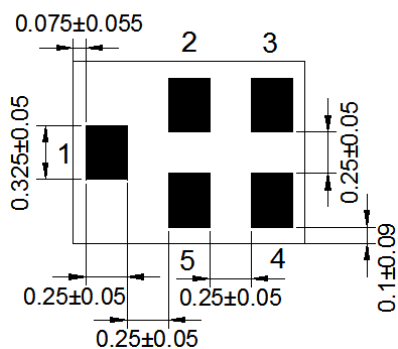
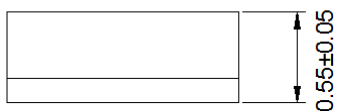
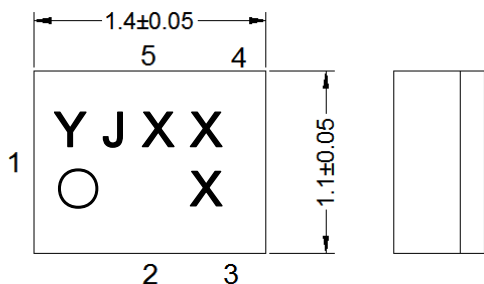
<http://www.wisol.co.kr>

E-mail: sales@wisol.co.kr

购买原装正品请认准-德方电子
免费服务热线: 400-655-8700
深圳总部电话: 0755-28187877
网址: www.denovocn.com

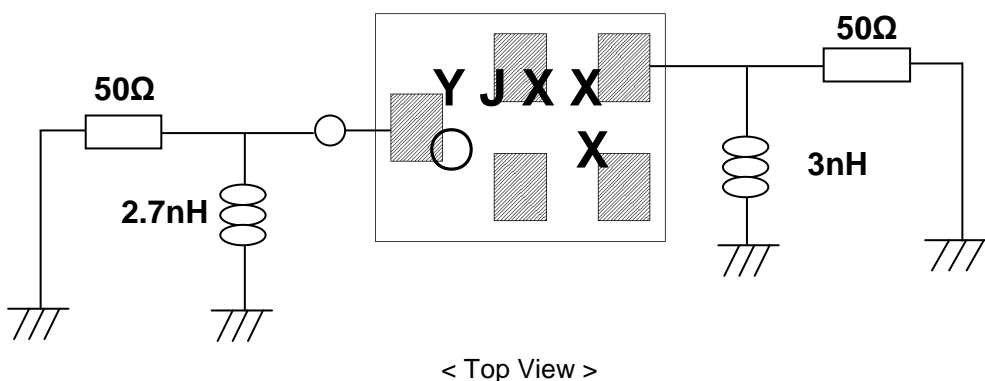
1. OUTLINE DRAWING & RECOMMENDED PCB

[Unit: mm]



No.	Function
2, 3, 5	Ground
1	Unbalanced Input
4	Unbalanced Output

2. TEST FIXTURE



3. PERFORMANCE

3-1. MAXIMUM RATINGS

CHARACTERISTICS	RATINGS	UNITS
DC Permissive Voltage	5	V
Maximum Input Power	28	dBm
Operating Temperature Range	- 20 ~ +85	°C
Storage Temperature Range	- 40 ~ +85	°C

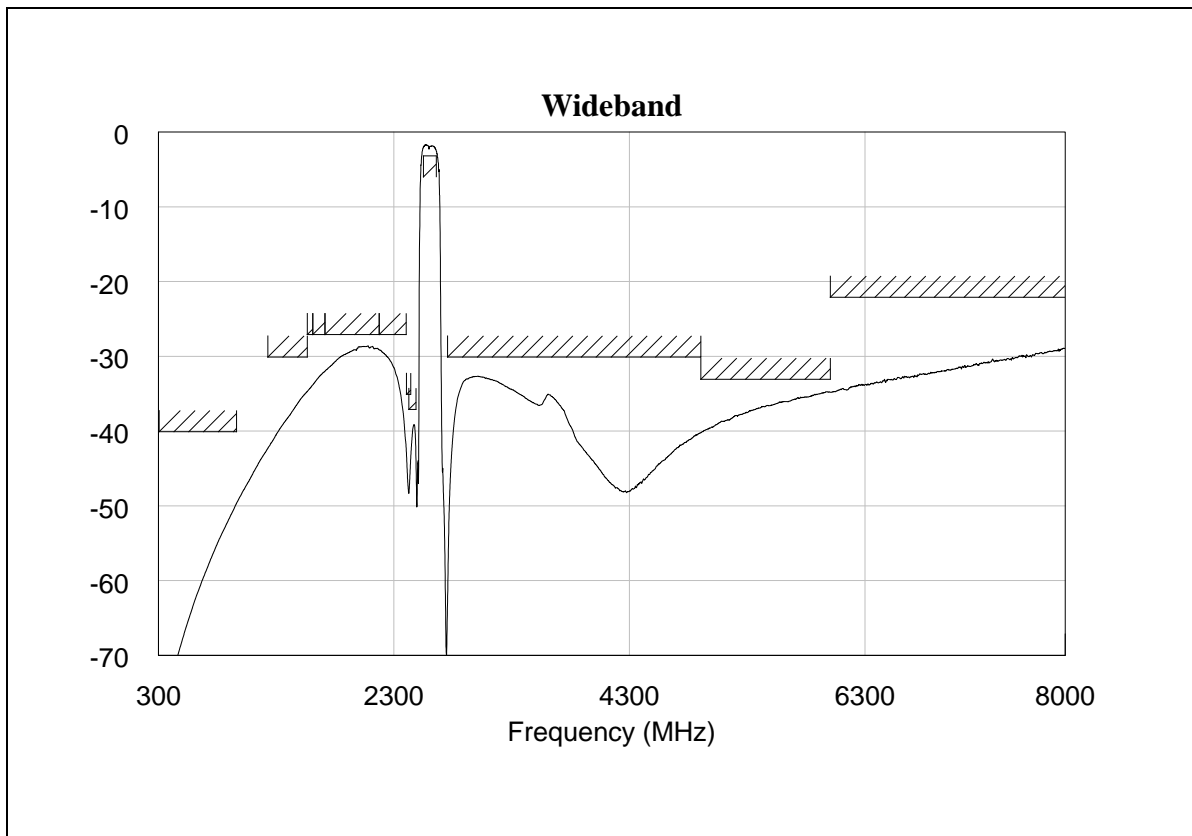
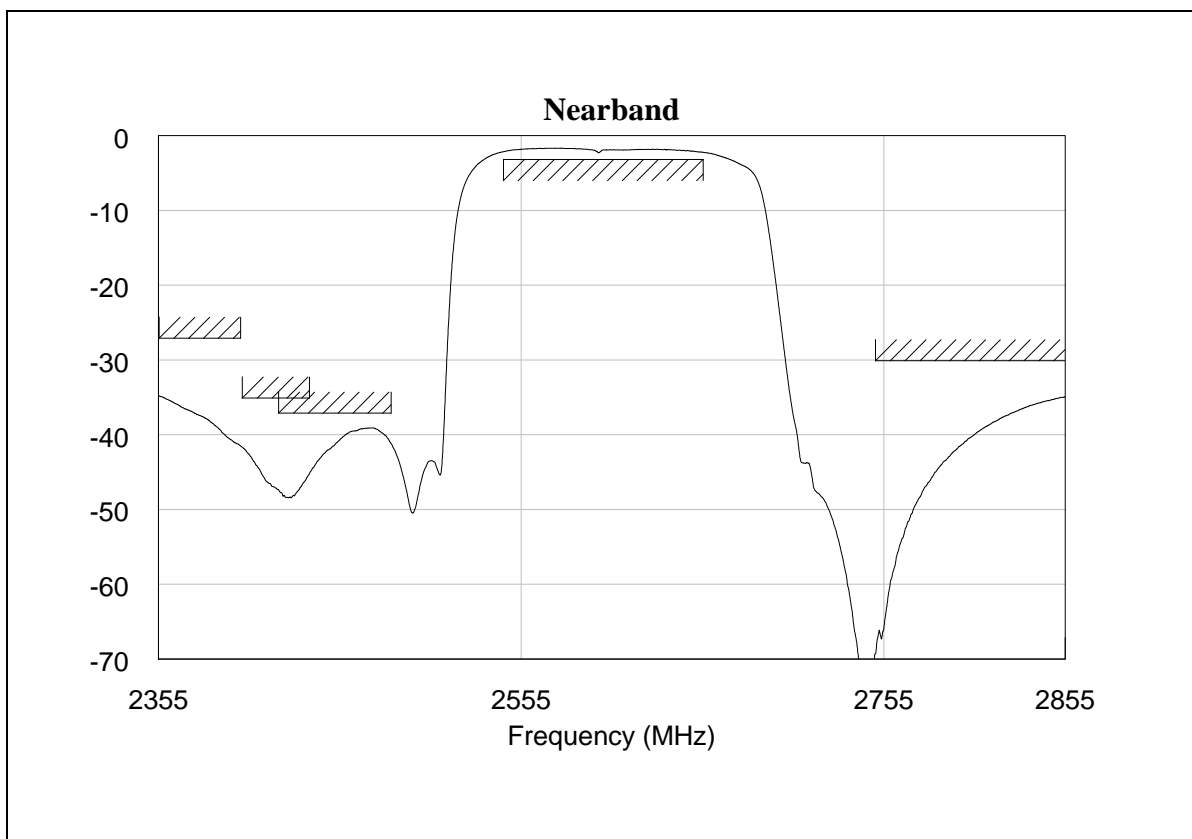
3-2. ELECTRICAL CHARACTERISTICS

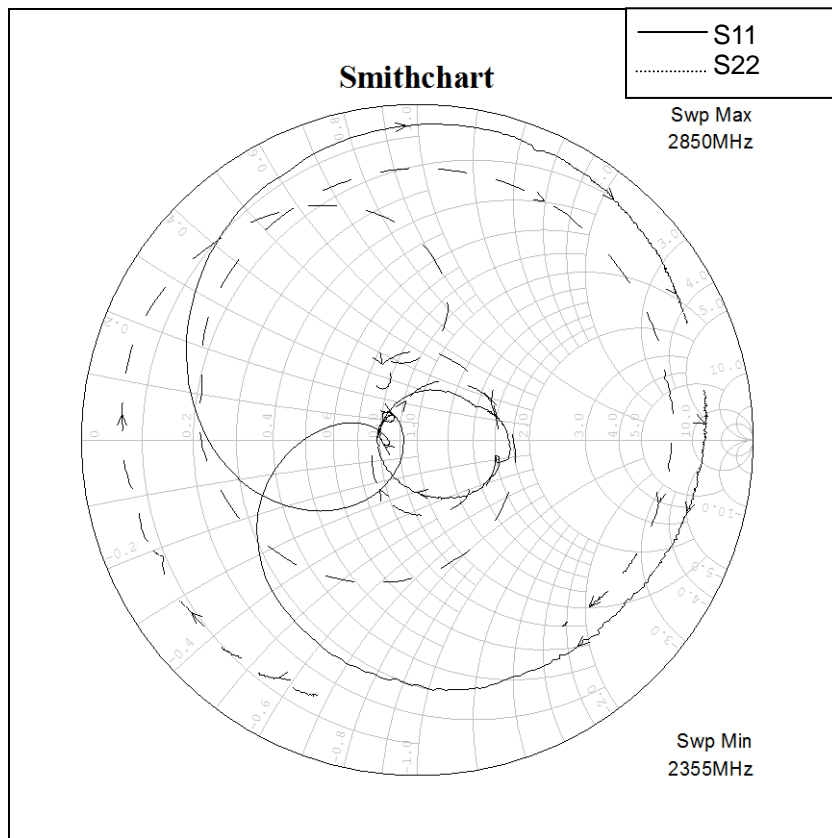
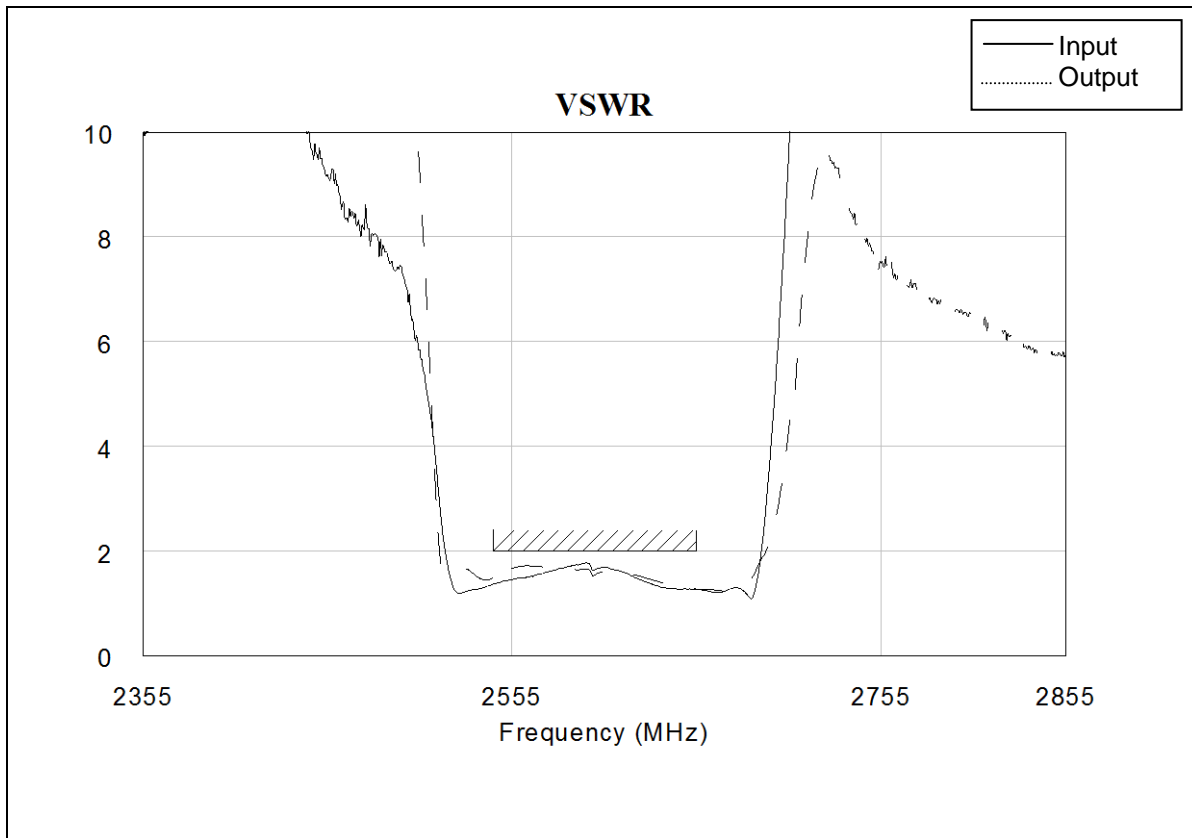
3-2-1. TABLE

Ta = - 20 ~ + 85 °C

Item	FREQUENCY RANGE [MHz]	UNIT	SPECIFICATION		
			Min.	Typ.(25°C)	Max.
Insertion Loss	2545 ~ 2655	dB		2.2	3.1
Inband Ripple	2545 ~ 2655	dB		0.6	1.5
Input VSWR	2545 ~ 2655	-		1.7	2.0
Output VSWR	2545 ~ 2655	-		1.7	2.0
Absolute Attenuation	10 ~ 960	dB	40	50	
	1225 ~ 1559	dB	30	35	
	1559 ~ 1606	dB	27	34	
	1606 ~ 1710	dB	27	32	
	1710 ~ 2170	dB	27	29	
	2170 ~ 2400	dB	27	29	
	2401 ~ 2438	dB	35	42	
	2421 ~ 2483	dB	37	39	
	2750 ~ 4900	dB	30	33	
	4900 ~ 6000	dB	33	35	
6000 ~ 8000	dB	22	29		
Termination Impedance			Input: Unbalanced 50Ω // 2.7[nH] Output: Unbalanced 50Ω // 3.0[nH]		

3-2-2. GRAPH

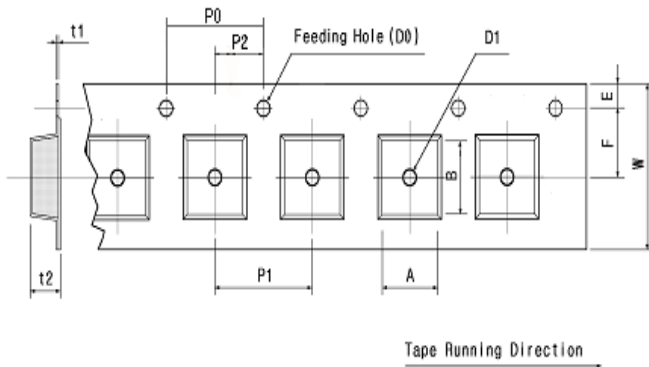




4. PACKING

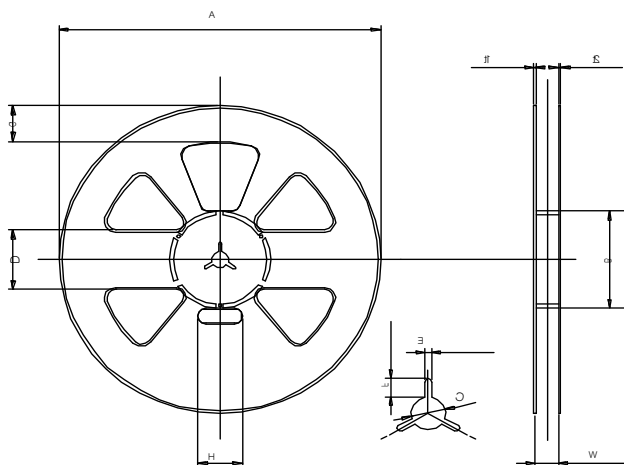
4-1. DIMENSIONS

- Carrier Tape [Unit: mm]



A	B	D0	D1
1.30	1.60	Ø1.50	Ø0.6
+0.05	+0.05	+0.10	MIN
-0.05	-0.05	-0.00	
E	F	P0	P1
1.75	3.50	4.00	4.00
+0.10	+0.05	+0.10	+0.10
-0.10	-0.05	-0.10	-0.10
P2	t1	t2	W
2.00	0.25	0.70	8.00
+0.05	+0.05	+0.05	+0.10
-0.05	-0.05	-0.05	-0.10

- Reel [Unit: mm]



A	B	C	D
Ø258.0	Ø81.0	Ø13.0	50.0
+1.0	+1.0	+0.5	+0.8
-0.5	-1.0	-0.5	-0.8
E	F	G	H
2.2	7.0	30.0	35.0
+0.3	+0.5	+0.8	+1.0
-0.3	-0.5	-0.8	-1.0
t1	t2	W	
1.8	1.5	9.0	
+0.5	+0.5	+1.0	
-0.5	-0.5	-0.5	

- The product shall be packed properly not to be damaged during transportation and storage.

4-2. REELING QUANTITY

10 inch reel: 8,000 pcs/reel

4-3. TAPING STRUCTURE

The tape shall be wound around the reel in direction shown below.

